

# Colorado CCA News

*Colorado Certified Crop Adviser Newsletter*



## Greetings from your CCA Board!

This issue includes a call for nominations for the State Noxious Weed Advisory committee. The deadline for this is **September 1st**, so I hope if any of you are interested you don't toss this newsletter into a pile to read on in the fall!! We have also included information from the USDA 2006 Summary of Land Values and Cash rents.

Since The Colorado Department of Agriculture is planning to take over licensing of private pesticide applicators on January 1, I have also

been working on rule changes for the Pesticide Act to allow us to also take over pesticide dealer record-keeping requirements for federal Restricted Use Pesticides. This responsibility also needs to transfer to the state from EPA on January 1. These are big changes for CDA's pesticide program. We have already hired two new inspectors who will just be working with private pesticide applicators issues.

**Laura Quakenbush, Chair,**  
Colorado Certified Advisers Board

### Inside this issue:

Nominations Requested 1-2  
for State Noxious Weed  
Advisory Committee

USDA Land Values and 2-3  
Cash Rents 2006  
Summary

Calendar of Upcoming 3  
CEUs

Web Sites Worth A Look 4

### Colorado CCA News

is a quarterly publication of the  
Colorado Certified Crop Advisers.

Sandra McDonald, Editor  
Direct questions and comments  
to:  
Betsy Buffington, Assistant Editor  
Phone: (970) 491-3947  
Fax: (970) 491-3862  
Email:  
Betsy.Buffington@colostate.edu

## Nominations Requested for State Noxious Weed Advisory Committee

*By Eric Lane, State Weed  
Coordinator, Colorado Department of  
Agriculture, Conservation Services  
Division*

The Commissioner of Agriculture annually appoints Coloradans to the state noxious weed advisory committee established in §108.7 of the Colorado Noxious Weed Act (C.R.S. 35-5.5). Recently, the Commissioner announced that he is soliciting nominations to fill several positions that will become vacant at the end of the current term and represent the perspectives of:

- Weed Management Professional (1 position)
- Agricultural Producer (2 positions)
- Resource Specialist/Industry/

Environmental Organization (2  
positions)

- Other/At-Large (2 positions)

The advisory committee's primary obligation is to make recommendations to the Commissioner concerning:

- The designation of state noxious weeds;
- The classification of state noxious weeds (into A, B, or C lists);
- The development and implementation of state weed management plans; and
- Prescribed techniques for eradication, containment, and suppression of state noxious weeds.

*(Continued on page 2)*

## Call for Nominations, continued

*(Continued from page 1)*

To accomplish the objectives laid out by the state legislature, each member is responsible for developing a network of stakeholders within his/her area of expertise and geographic region of the state. Each member utilizes this network to solicit input and communicate the committee's recommendations to the stakeholders s/he represents. In addition, each member is expected to meet quarterly with the committee as a whole (note that committee members serve without per diem compensation or expenses).

interested in serving on the committee, please submit a nomination no later than September 1<sup>st</sup>. A nomination must include a completed nomination form (an electronic version is available at <http://www.ag.state.co.us>) as well as a statement describing the nominee's interest regarding weed management and his/her qualifications to represent the specific perspective identified. All nominees should expect to attend the committee's next meeting in Lakewood on November 1, 2006.

Appointments are made for two year terms. Committee members are limited to serving two, consecutive terms each, i.e., four years. If you can make this commitment are

If you have any questions about the nomination process or the state noxious weed advisory committee, contact me at 303-239-4182 or [eric.lane@ag.state.co.us](mailto:eric.lane@ag.state.co.us).



*Canada thistle*

## USDA Land Values and Cash Rents 2006 Summary

The National Agricultural Statistics Service has released its latest Agricultural Land Values and Cash Rents report.

and pasture values averaged \$1,000 per acre on January 1, 2006, compared with \$2,110 and \$820 per acre, respectively, a year earlier.

### Agricultural Land Values Highlights

Farm real estate values, a measurement of the value of all land and buildings on farms, averaged \$1,900 per acre on January 1, 2006, up 15 percent from 2005. The \$1,900 per acre is a record high and \$250 more than a year earlier.

The increase in farm real estate values continues to be driven by a combination of mostly nonagricultural factors, including relative low interest rates and strong demand for nonagricultural land uses. Demand for farm real estate as an investment continues to be a strong market influence.

Cropland and pasture values rose by 13 and 22 percent, respectively, since January 1, 2005. Cropland values averaged \$2,390 per acre

The average value of farm real estate in Colorado increased from \$940 per acre in 2005 to \$1,090 per acre in

*(Continued on page 3)*

## Call for Articles

Do you have an idea for a future newsletter article? Do you know of a CCA member who has received recognition and should be mentioned in a future CCA newsletter? Do you know of any websites that would be of interest to other CCAs?

If you have answered "yes" to any of the above questions or have any other ideas or comments to share, please contact Betsy Buffington at [betsy.buffington@colostate.edu](mailto:betsy.buffington@colostate.edu) or (970) 491-3947.

## USDA 2006 Summary, continued

*(Continued from page 2)*

2006, an increase of 16 percent from 2005. Colorado cropland values, including irrigated and non-irrigated cropland, rose 6 percent, from \$1,170 per acre in 2005 to \$1,240 per acre in 2006. The average value of pasture per acre increased 29 percent in Colorado from 2005, from \$620 per acre to \$800 per acre.

### Agricultural Cash Rents

#### Highlights

Nationally, cash rents per acre paid to landlords for cropland rose 1.3 percent while pasture rents increased 4.9 percent for the 2006 crop and grazing year. Cropland cash rents paid in 2006 averaged \$79.00 per acre, compared with \$78.00 per acre for 2005. Pasture cash rents

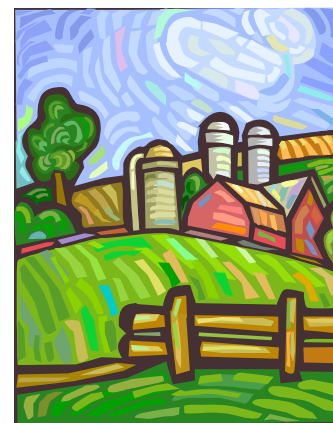
averaged \$10.80 per acre, 50 cents higher than 2005. The increases in cropland and pasture rental rates continue to reflect producers' optimism following the combination of high production and price levels of major U.S. agricultural commodities in 2005.

Cash rents for cropland in Colorado at \$61.00 per acre remained unchanged from last year. Colorado cash rents for pasture land decreased by 30 cents per acre to \$4.00.

#### For More Information

To view the entire Land Values and Cash Rents 2006 Summary, please go to:

<http://usda.mannlib.cornell.edu/usda/current/AgriLandVa/>



## Calendar of Upcoming CEUs

Remember, the Colorado CCA Board will automatically accept credits for any approved programs in adjoining states (Nebraska, Kansas, Oklahoma, New Mexico, Arizona, Utah, and Wyoming). Sign the attendance sheet along with your CCA number to get proper credit.

You should follow up on out-of-state CEUs to make sure that your records are credited after a reasonable period of time. If they are not, contact Lorene Peterson of the ICCA at 608-268-4955.



Date and Location	Course Title	CEU's	For more information contact:
9/28/06-9/29/06 La Junta Municipal Airport, La Junta	CAAA SAFE Fly-in	1.0 PM	Dolle Lehrkamp 719-768-3367

Other meetings for continuing education credits will be announced in future CCA newsletters or can be found on the Colorado CCA website at <http://www.coloradocca.org/calendar.htm>.

## Colorado Certified Crop Adviser Newsletter

Colorado Certified Crop Adviser Program  
Dept. of Soil and Crop Sciences  
Colorado State University  
Fort Collins, CO 80523-1170



---

### Web Sites Worth A Look

Colorado CCA website

<http://www.coloradocca.org>

Calendar of upcoming CEUs, current and past CCA newsletters, links to Colorado and National sites, information on board and committee members, and much more!

International CCA website

<http://www.certifiedcropadviser.org>

Official site of ICCA.

ICCA Board Minutes

<http://www.agronomy.org/cca/minutes.html>

February 2006 ICCA minutes, presentations, attachments, and pictures.

ICCA Self-Study Exams

[http://www.agronomy.org/cca/exam\\_list.php](http://www.agronomy.org/cca/exam_list.php)

The ICCA Board allows all CCAs to

earn up to 20 of their 40 CEUs

required in the two-year cycle through self-study.

CCA Advantage Online CEUs

<http://www.agprofessional.com/ccadvantage.php>

Self-study online CEUs from AgProfessional.com.

Colorado Environmental Pesticide Education Program

<http://www.cepep.colostate.edu/>

Information on issues relating to pesticides.

U.S. Drought Monitor

<http://www.drought.unl.edu/dm/monitor.html>

An interactive tool developed by the National Drought Mitigation Center to collect, quantify, and map reported drought impacts for the U. S.

