

# Colorado CCA News

*Colorado Certified Crop Adviser Newsletter*

## Colorado CCA Update

*By Jim Sharkoff, Colorado CCA Board Chairman*

Continuing Education credits for Professional Development (PD) are now being accepted by both the Colorado and ICCA Boards. This new Continuing Education category was approved last fall by the ICCA Board and Advisory Council and became effective January 1, 2003.

CCAs may earn up to 5 PD CEUs every 2 years. There is no minimum requirement for PD CEUs. However, the minimum requirement of 5 Board Approved CEUs every 2 years for each of the other CEU categories, Nutrient, Pest, Crop, and Soil and Water Management, is still in effect.

Professional Development CEUs can be either Board Approved or Self Reported. If you will be Self Reporting, use the form available online at [http://www.agronomy.org/cca/ceu\\_reporting\\_form.html](http://www.agronomy.org/cca/ceu_reporting_form.html). A link to the ICCA web site and the Self Reporting form is also available on the Colorado CCA web site located at <http://www.ColoradoCCA.org>.

Example: A Colorado CCA has acquired 20 Board Approved CEUs, five each for Nutrient, Pest, Crop, and Soil and Water Management. Of the remaining 20 Board Approved or Self-Reported CEUs that are required for each 2 year cycle, 5 may address Professional Development while the remaining 15 may address either or all of the other 4 CEU categories.

Professional Development subject matter should be focused on one or more of the following areas:

1. Ethics training
  - Ethical and professional conduct
  - Liability and employment law
2. Computer courses
  - Computerized accounting packages
  - Specialized agronomic applications (nutrient management assessment tools, soil analysis, etc.)
  - GIS/GPS mapping and interpretive software training
  - Multi-media presentation training
  - Graphics or desktop publishing programs
  - Word processing applications
3. Business courses
  - Financial analysis
  - Business planning and budgeting
  - Resource management
  - Financial and credit management

*(Continued on page 2)*



**CERTIFIED  
CROP ADVISER**

### Inside this issue:

Colorado CCA Update	1-2
Earn CEUs at ASA-CSSA-SSSA Annual Meetings	2-3
The Worker Protection Standard in Colorado	4
Meet the Colorado CCA Board—Sandra McDonald	5
CCA Advantage has New Home	5
Calendar of Upcoming CEUs	5
Crop Water Use Reports for Irrigation Scheduling	5
Web Sites Worth A Look	6

## Colorado CCA News

is a quarterly publication of the Colorado Certified Crop Advisers.

Sandra McDonald, Editor

Direct questions and comments to:  
Betsy Buffington, Assistant Editor  
Phone: (970) 491-3947  
Fax: (970) 491-3862  
Email: [Betsy.Buffington@colostate.edu](mailto:Betsy.Buffington@colostate.edu)

## Colorado CCA Update (continued)

*(Continued from page 1)*



- Marketing and production decision-making
  - Time management
  - Leadership skills
4. Economic seminars
    - Micro and macro-economic topics
    - Global supply and demand forecasts
    - International trade policies
    - Commodity marketing and trade
  5. Legislative and policy related training or information sessions
    - Discussion of proposed or pending legislative and or policy changes affecting the business environment in which CCAs operate
  6. Communications
    - Communications in the work place
    - Business writing
    - Interpersonal communications
    - Dealing with difficult people

The ICCA Continuing Education Committee is in the process of finalizing a CEU Guidance Document that should be available soon.

Also, if you run across a program, workshop or seminar and the Vendor has not applied for CO CEUs, ask them to contact myself or Dr. John Mortvedt at CSU, and we will be happy to facilitate assignment of CEUs.

Finally, I was hoping to be able to provide some information at this time regarding how much Nutrient, Pest and Land Treatment Practices are worth to NRCS when a CCA does the planning and implementation. Unfortunately, the NRCS Not To Exceed (NTE) Cost List is still a moving target and while some 20 producers have requested TSP assistance in Colorado, no plans have been written and no one has been paid. We'll let you know more as soon as we know something for sure.

## Earn CEUs at ASA-CSSA-SSSA Annual Meetings

*Reprinted from CSA News, July 2003*

CCAs have the opportunity to earn up to 16 CEUs over two-and-a-half days during the Annual Meetings of the American Society of Agronomy (ASA)-Crop Science Society of America (CSSA)-Soil Science Society of America (SSSA) Annual Meetings in Denver, Nov. 2-6.

Division A-9, Professional Practitioners, features four symposia organized so CCAs can receive CEUs in professional development and also in the nutrient management and soil and water management performance areas.

Even if you don't need all 16 CEUs, these sessions feature current research

summarized specifically for the practitioner, according to Alan Blaylock, Agrium US Inc., division chair. Topics include: phosphorus, irrigation, salinity, plant root morphology, remote sensing, precision agriculture and chloride nutrition in wheat.

### **A-9 Professional Practitioners Division Symposia Tentative Schedule**

*Please see the Annual Meeting Program Book online at [www.asa-cssa-sssa.org/anmeet](http://www.asa-cssa-sssa.org/anmeet) for all times and locations.*

#### Monday, Nov. 3

- What is the role of crop residue and

*(Continued on page 3)*



## Annual Meeting in Denver (continued)

(Continued from page 2)

- organic matter in high yielding systems? organizer/moderator, Lance Murrell
- What are the best P fertilization strategies for the Great Plains? organizer/moderator, Mike Stewart
- Can plant root systems be managed for efficient crop production? organizer/moderator, Kevin Barber
- How do we make the most of available water? Converting water into harvestable crop. organizer/moderator, Jim Bauder

### Tuesday, Nov. 4

- Are management zones useful and practical in precision agriculture? organizer/moderator, Dwayne Westfall
- Why is chloride fertilization important for small grains? organizer/moderator, Ray Lamond
- How do we manage soil salinity and sodicity problems? organizer/moderator, Jim Bauder

### Wednesday, Nov. 5

- What do we do with all this manure? organizer/moderator, Scott Murrell

Immediately following Wednesday morning's symposium, the division's business meeting will take place. Blaylock extends an open invitation to all practitioners, member or not, to participate in this business session.

### **Meeting Highlights**

The Annual Meetings begin Sunday evening with the ASA-CSSA-SSSA popular Plenary Session beginning at 7 pm on Nov. 2 featuring Margaret Davidson of National Oceanic and Atmospheric Administration who has been heralded as an innovator in sustainable agriculture and coastal resource management. Experts in soil-root relationships, atmospheric gases, conservation biology and sustainable agriculture are the featured lecturers during this year's Annual Meetings.

A Career Fair will be held on Monday, Nov. 3 from 8am-Noon for all Annual Meeting attendees. A roundtable, "Meeting the needs of professional soil scientists," co-hosted by the U.S. Consortium of Soil Science Association (USCSSA) and SSSA will be held on Tuesday, Nov. 4 from 7:30-9:30pm at the Adams Mark Hotel.

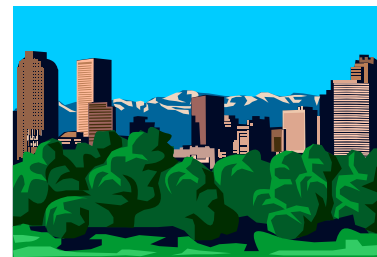
A full slate of technical oral and poster paper sessions during the week that cover such topics as soil nutrient management, soil and water conservation, crop management, and pest control are scheduled through noon on Thursday, Nov. 6. The event also features supplier exhibits, professional tours, and childcare for registrants.

### **Registration Information**

For the latest updates on sessions and times, or to register and make housing reservations for the Annual Meetings, visit [www.asa-cssa-sssa.org/anmeet](http://www.asa-cssa-sssa.org/anmeet) or e-mail [dvlovick@agronomy.org](mailto:dvlovick@agronomy.org) or call 608-273-8090, ext. 339 and ask to receive the Pre-Registration Brochure, which features a registration and housing form.

ASA-CSSA-SSSA members who register by Sept. 19 receive the pre-registration rate of \$300; after Sept. 19 it is \$355. The non-ASA-CSSA-SSSA-member rate is \$400 before Sept. 19 and \$455 after Sept. 19. A one-day registration is available on-site, \$150 for members and \$175 for non-members.

CCAs can become members of ASA-CSSA-SSSA for as little as \$73, and the membership is good through all of 2004. As an added incentive, the Societies are offering a discounted rate to new certified members. CCAs who have never been members of ASA-CSSA-SSSA can join for only \$21, and the membership is good through all of 2004. To become a certified member, call 608-273-8090, ext. 305.



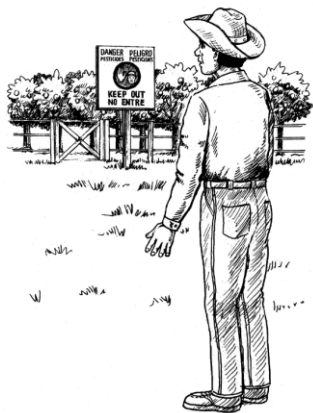
### **Call for Articles**

Do you have an idea for a future newsletter article? Do you know of a CCA member who has received recognition and should be mentioned in a future CCA newsletter? Do you know of any websites that would be of interest other CCAs?

If you have answered "yes" to any of the above questions or have any other ideas or comments to share, please contact Betsy Buffington at [Betsy.Buffington@ColoState.edu](mailto:Betsy.Buffington@ColoState.edu) or (970) 491-3947.

## The Worker Protection Standard in Colorado

*The following article was written by Sandra McDonald, CCA Board Member, and is reprinted from the Summer 2003 issue of the Colorado Onion Association Newsletter.*



As many of you are aware, in early June, the Environmental Protection Agency (EPA) proposed what is believed to be the largest Worker Protection Standard (WPS) fine in Colorado history. This has rightfully raised the level of concern of all agricultural establishments in Colorado.

### EPA Inspections Continuing

EPA is continuing to inspect private applicators and agricultural establishments. Any farm, nursery, greenhouse, or forest block where pesticides are used in the production of agricultural plants and commodities is subject to inspections. Even if agricultural establishments do not use restricted use pesticides, they can be inspected if using general use pesticides on crops.

Agricultural operations that have a number of employees, including those with migrant workers, will be prime candidates for inspections.

### Common WPS Violations

Colorado State University's Environmental and Pesticide Education Program (CEPEP) has been working with EPA and many other groups and individuals on this issue. The most common violations include failure to:

- Assure training
- Post application information in a central location
- Post safety poster and emergency information in a central location

### WPS Resources Available

CEPEP has developed a number of WPS factsheets which are available on the CEPEP website at: <http://www.colostate.edu/Depts/SoilCrop/extension/CEPEP/wpsResources.htm>. Each factsheet addresses a specific WPS requirement. The resource list provides links and contact information for a variety of WPS related resources.

A checklist designed for owners of an agricultural establishment (farm, forest, nursery or greenhouse) who would like to self-evaluate their compliance with WPS has been developed by CEPEP. It refers to the specific pages of the EPA Worker Protection Standard for Agricultural Pesticides How to Comply Manual. The manual provides the information necessary for employers to comply with the requirements of the 1992 WPS, but does not include subsequent revisions. It can be viewed as a scanned copy at: <http://agensafety.tamu.edu/wps/epawps0.htm>. Please refer to the printed document from EPA for the actual legal guidelines. The amendments can be found at: <http://www.epa.gov/oppfead1/safety/workers/amendmnt.htm>.

CEPEP has also prepared a "From the Ground Up - Agronomy News" newsletter focusing on pesticide issues in Colorado, including an extensive overview of WPS. It can be viewed at <http://www.colostate.edu/Depts/SoilCrop/extension/Newsletters/news.html>.

If you have any questions and need help implementing WPS and how it applies to your operation, call Sandra McDonald at 970-491-6027.

## Meet the Colorado CCA Board—Sandra McDonald

Sandra McDonald is the Environmental and Pesticide Education Specialist with Colorado State University Cooperative Extension. She has been with CSU since October 1996.

Sandra grew up on a farm outside of Chester, South Carolina. As an undergraduate, Sandra attended Erskine College in South Carolina where she majored in Biology. She did her graduate work at Clemson University and the University of Florida in Weed Science.

Additionally, Sandra was a Peace Corps Volunteer in Thailand where she worked with the Royal Thai Extension Service as an integrated pest management specialist and pesticide safety educator.

Sandra represents CSU on the Board and is on the Training Committee. Contact Sandra at 970-491-6027 or by email at: Sandra.McDonald@ColoState.edu.



*Sandra McDonald  
CCA Board Member*

## CCA Advantage has New Home

*Reprinted from Societies NewsFlash, July 4, 2003*

*CCA Advantage*, the Certified Crop Adviser newsletter, has a new home. Formerly in *Crop Decisions* magazine, you will now find it in *Ag Professional*,

published 10 times a year by Doane. This new publication is a merger of *Crop Decisions* and *Ag Retailer*. View CCA Advantage, including the self-study CEU quiz at <http://www.agprofessional.com/ccadvantage.php>.

## Calendar of Upcoming CEUs

There are currently no upcoming Colorado CEUs available. Other meetings for continuing education credits will be announced in future CCA newsletters or

can be found on the Colorado CCA website at <http://www.coloradocca.org/calendar.htm>.

## Crop Water Use Reports for Irrigation Scheduling Available

*By Troy Bauder, Ex-officio Board Member*

As you help your clients with their irrigation schedules this summer, remember that daily crop water use (ET) reports are available on the internet at [www.coagmet.com](http://www.coagmet.com). Crop water use or evapotranspiration (ET) can be used to improve irrigation management and conserve limited water resources. Because ET is affected by our ever changing weather conditions, it can fluctuate daily and impact the demand for water by crops and landscapes. For example, corn water use can be as high as 0.40 inches per day when temperatures are in the mid-nineties, with moderate wind and low humidity,

but will drop to half of that on cooler (low-eighties), more humid days.

These changing weather conditions are measured by a network of weather stations throughout Colorado. The weather data is used to calculate and produce ET reports for several common crops. New revisions to this web site allow users to choose crops, weather stations, and planting dates to customize their reports. The web site also provides a map to locate the nearest station or stations and instructions on how to use the information. We encourage you to check out this useful tool at [www.coagmet.com](http://www.coagmet.com).



## Colorado Certified Crop Adviser Newsletter

Colorado Certified Crop Adviser Program  
Dept. of Soil and Crop Sciences  
Colorado State University  
Fort Collins, CO 80523-1170



**CERTIFIED  
CROP ADVISER**

---

### Web Sites Worth A Look

Colorado CCA website

<http://www.coloradocca.org>

Calendar of upcoming CEUs, current and past CCA newsletters, links to Colorado and National sites, information on board and committee members, and much more!

TechReg - Step by Step Guide

<https://techreg.usda.gov/help/TechRegDirections.doc>

[TechRegDirections.doc](https://techreg.usda.gov/help/TechRegDirections.doc)

Detailed directions on how to register as a Technical Service Provider (TSP) and how to locate a TSP.

Colorado Water Concerns

<http://cwri.colostate.edu/cowaterconcerns.htm>

[cowaterconcerns.htm](http://cwri.colostate.edu/cowaterconcerns.htm)

The Colorado Water Resources Research Institute provides links to Colorado resources including irrigation, drought, flood, water laws, water quality, and watersheds.

Conservation Technology

Information Center

<http://www.ctic.purdue.edu/CTIC/CTIC.html>

[html](http://www.ctic.purdue.edu/CTIC/CTIC.html)

Provides research and technology publications and educational information on soil and water quality.

IPM Almanac

<http://www.ipmalmanac.com>

Whether you're experienced in Integrated Pest Management or are just starting out, this web site provides you with the information and tools you need to continue down your IPM path.

Colorado State Fair

<http://www.coloradostatefair.com>

August 16-31 in Pueblo.

Farm Jokes

<http://www.farmjokes.com>

Several good and many bad jokes.

